



PRO Wear^{by ID®}

ID[®] IDENTITY

MADE TO LAST

We know TEXTILE

WELCOME TO ID® IDENTITY

Every day, we provide clothing for companies and events across Europe, emphasizing the joint corporate identity of our customers' customers. Rooted in Denmark, but with an international outlook, we want to deliver best-in-industry clothing in terms of quality, functionality, design and responsibility.

WE KNOW THE MARKET

In the partnership with us, you get access to all ID® Identity's experience and expertise. We know the market and the common needs of the various industries, which is your guarantee that you can always offer your customers professional advice and the best range of products.

Our large stock at our central warehouse helps us to avoid back orders and delayed deliveries. We have high standards for ourselves, and measure our performance down to single customers. Our delivery performance is documented to be 97% (2020).

We are experts in the areas of Textile Service and leasing, where we can provide quality solutions in relation to clothing with the right durability, design and comfort.

PRO Wear by ID®

Hard work demands clothing which is designed for movement and hard work. ID® Identity's PRO Wear collection is developed for people, who are active in their work and need clothing which simply lasts, day in and day out.

QUALITY EQUALS LONG LIFESPAN

Long lifespan, high product performance and responsible production are the foundation for development of new products as well as maintaining our existing products. We want to keep on embracing the high product performance and long durability of our products also when working with sustainable materials and products.

ENGAGEMENT AND GREATER RESPONSIBILITY

It is ID® Identity's goal to minimize the impact we and our suppliers have on the environment. In our journey towards this goal, we became a proud member of the Better Cotton Initiative, BCI in December 2020. All our PRO Wear products are covered by Oeko Tex certification and back in 2017, we came much closer to sourcing more sustainable cotton, when we received the license for EU Ecolabel, which also places demand on responsible cotton production.

THINKING ABOUT THE FUTURE

ID® Identity will continue to select focus areas, where we believe, we can play a significant role in creating products designed for performance and durability and with care for the environment and maintaining the good quality in the complete lifespan of the products. Our environmental policy and yearly COP report contribute to our overall strategy towards our continuous work to improve our environmental achievements.



FOCUS ON RESPONSIBLE SOURCING

PROUD MEMBER

In December 2020, we became a member of the Better Cotton Initiative. We are proud to be a member of the initiative as a part of our strategy to source responsibly. We have chosen to continue the journey starting back in 2017, when choosing the sustainable cotton production for our Ecolabel program.

Following our DNA, membership of Better Cotton Initiative is a natural part of our responsible progress supporting sustainable development in our supply

chain and the impact on people and environment.

Why do we partner with Better Cotton Initiative?

We choose to partner with the Better Cotton Initiative to improve cotton farming globally. BCI Farmers care for the environment and implement the principles of decent work.

Cotton is an important raw material to ID® by volume, and by switching our sourcing of conventional cotton to more sustainable cotton alternatives we can have a positive impact on people and environment.



BCI exists to make global cotton production better for the people who produce it, better for the environment it grows in and better for the sector's future.



THE ENVIRONMENT

Better Cotton is grown with focus on environmental principles, which protects our planet and the people who farm and work with the cotton.



THE PEOPLE

BCI farmers receive education and training in agricultural best practice, addressing social, environmental and economic factors.



THE ECONOMY

The Better Cotton Initiative is working towards to improve livelihoods and economic development in cotton producing areas.

100%
of our PRO Wear styles
are OEKO-TEX®-
certified



The EU Ecolabel is the official ecolabel of the EU. In the textile industry, the focus is on more sustainable agriculture, energy efficiency, less pollution in the production process and fewer hazardous substances. The Ecolabel is your guarantee that clothing bearing the EU Ecolabel impacts the environment as little as possible.



In December 2020, we became a member of the Better Cotton Initiative. We are proud to be a member of the initiative as a part of our strategy. Cotton is an important raw material to ID® by volume, and by switching our sourcing of conventional cotton to more sustainable cotton alternatives we can have a positive impact on people and environment.



STANDARD 100 by OEKO-TEX® is your guarantee that the clothing does not contain harmful substances. It is the world's leading label for textile products which have been tested for substances which are harmful to human health and the environment. Clothing that carries the STANDARD 100 by OEKO-TEX® label is subject to requirements covering pH value and the content of, for example, pesticides and heavy metals. ID® has a wide selection of STANDARD 100 by OEKO-TEX-certified products, including products that meet the requirements of STANDARD 100 by OEKO-TEX, Annex 6, product class 1, which places even stricter requirements on the content of substances in the clothing which are hazardous to human health and the environment.



The Accord on Fire and Building Safety in Bangladesh (the Accord), from May 2021, is a three year independent, legally binding agreement between apparel brands and retailers and trade unions designed to build a safe and healthy Bangladeshi Ready made Garment (RMG) Industry.



ID® is a member of amfori BSCI, which has formulated a set of common ethical principles for purchasing and production in non-EU countries. This means production where there is no child labour, forced labour or any form of discrimination, the guarantee of a safe working environment and reasonable wages and working hours.



ID® is a member of Global Compact. At ID® we still want to act responsibly and contribute to a sustainable development. So we are proud of our membership of UN's Global Compact. It provides us with a basis for working with the internationally acknowledged conventions.



The Bureau Veritas group is one of today's largest companies in the world within inspection, classification, counselling and certification. They supply services of high quality to help their customers comply with the increasing demands on quality, safety, environmental protection and social responsibility.



TENCEL™ is a trademark of Lenzing AG. TENCEL™ Lyocell is made of natural raw material wood sourced from sustainable forestry in an environmentally friendly closed-loop system in which water and solvents from production are reused. TENCEL™ Lyocell provides breathability, softness, quick-drying and naturally reduces bacterial growth.

PRO WEAR QUALITIES



01. WASHING

Can withstand being washed at 80°C (white) or 60°C (colours).



02. CERTIFICATION

OEKO-TEX® certified, which is your guarantee that the clothing contains no harmful substances. EU ECOLABEL certified, which is your guarantee for environmentally friendly production and manufacturing of products.



03. LOGO/CHIP

Option of logos suitable for industrial washing and attachment of chip in-house.



04. SPECIAL PRODUCTION

Option of special production matching particular customer requirements.



05. FEWER REPLACEMENTS

Our pre and aftercare secure a long lifetime for our products, which means fewer replacements and therefore better economy for our customers.



06. TESTED

Tested according to ISO 15797.



07. SEAMS / BUTTONS / ZIPPER

Strong seams securing long life time. All plastic buttons are stained through, and all press studs are made of stainless metal, so both types are well suited for industrial washing. Strong zippers.



08. TREATMENT

Specially developed pre and aftercare providing lifelong stability and low shrinkage, ensuring a right fitting even after many washes.



09. SIZES / COLOURS

Available in many sizes - from 2XS to 6XL and in 21 different colours.



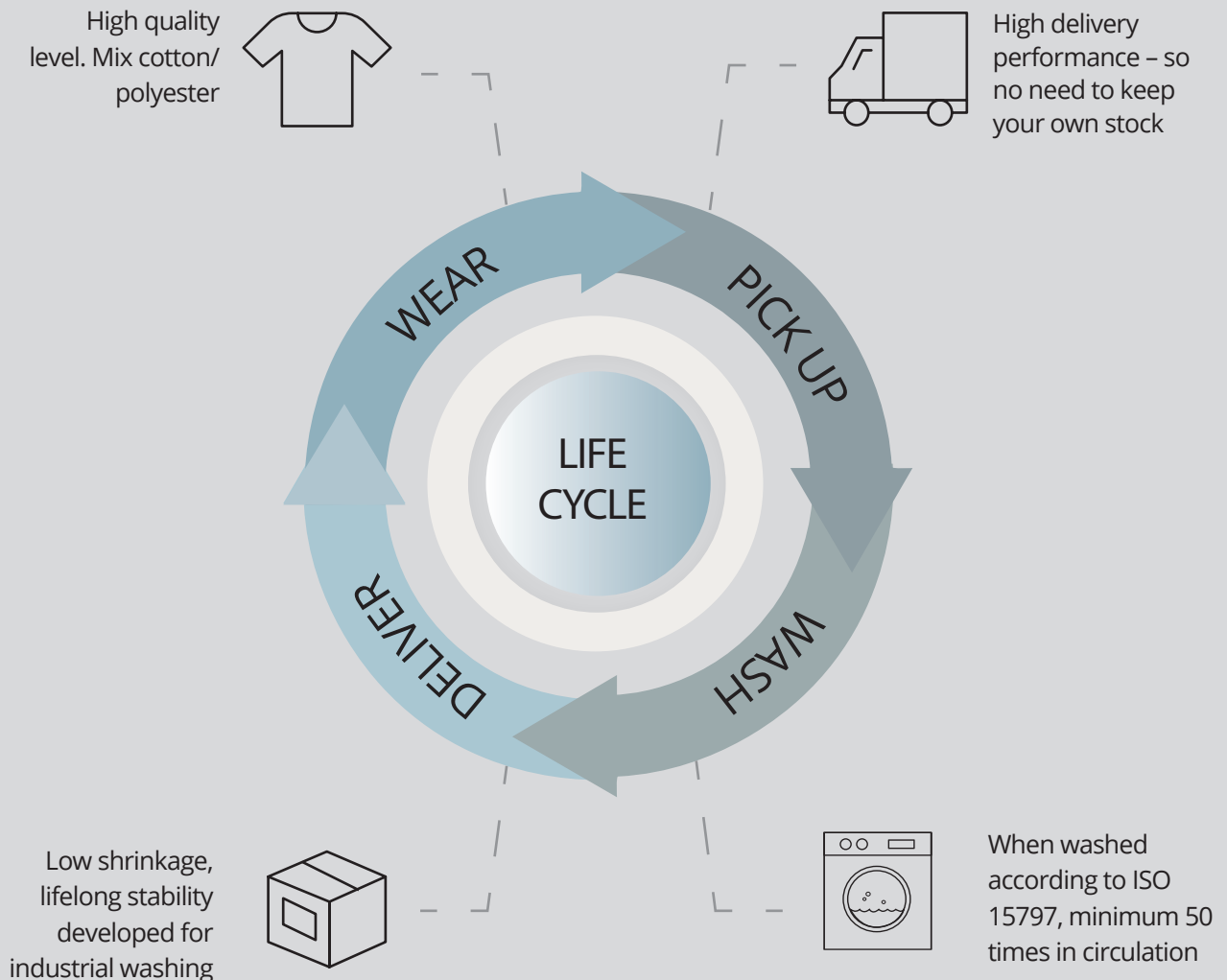
10. MATERIALS

A combination of cotton and polyester, so that the products get the best from both qualities. Cotton provides softness/ breathability and makes the clothing comfortable to wear. Polyester provides durability and stability when it comes to fitting and colour.

PRODUCT ASSUREMENT

All of our products have undergone strict quality tests to ensure that you get the best possible solution, matching our quality and your needs.

WASH, WEAR AND REPEAT



FOCUS ON LONG LIFESPAN

CSR is about taking responsibility for a company's impact on people and the environment. This approach has given us a reputation as one of the best in the industry at delivering high quality, well-designed and durable products. And we will continue to do so. We believe that there are always

customers who understand the value of quality – and sustainability is a quality. A good product which lasts a long time is far more ethical and environmentally friendly than a throw away product. This makes our contribution to sustainability very concrete and effective, as it is integrated into everything we do – every day.

ID® Service

ONE STOP SHOPPING

READY TO WASH

You can do all your shopping in one place, saving time, money and administration. Since we handle the entire clothing process at ID® Identity, you avoid the long delivery times that other production options may involve. It doesn't get any easier than this.

QUALITY YOU CAN PUT YOUR NAME TO

ID® has been known for decades for its high quality products, millions of which have been sold all over Europe. When you order from ID® Identity, we draw on

our renowned quality, which is your guarantee for an attractive and uniform product you can pass on to your customers with confidence.

SPEED UP YOUR BUSINESS

Everything is handled via a smooth and efficient ordering system that improves product quality and delivery reliability. This leaves you to spend the time on your core business. You are always welcome to contact us if you want to know more about our chip service or warehouse capacity.



JUST LEAVE IT TO US

Let us make our products into yours. ID® Service can add logo, embroidery or chip to your company clothing. It doesn't have to be expensive or time-consuming. It's easy, faster and saves time.



We make our products into yours



Did you say chip?
Yes of course we can attach chip



In need of space?
Let us store it for you



Product ideas?
Let our designers help you



High delivery reliability?
Documented to be 97%
(2020)

ID® Warehouse

ALWAYS ON STOCK

A STABLE PRODUCT RANGE

One of ID®'s greatest strengths is that we always stock an extensive basic range. At ID® you can choose products from an extensive and stable basic collection – and we have them in stock in large quantities. This is a deliberate choice on our part to make it safe and easy for you to supplement your range – so that you can get what you need, and quickly.

GREAT PARTNERSHIPS

Throughout our long history, both ID® and our partners

have built up extensive experience – and it makes sense to develop with existing suppliers rather than starting again with new suppliers every time you face a challenge.

STRONG LOGISTIC SYSTEM

We have developed a very strong logistic system operated by skilled and reliable employees, drawing on years of experience and the latest and most advanced technology solutions. They process small and very large orders alike with great precision, and ship every order, throughout Europe, within 24 hours.

ID® LOGISTICS ADVANTAGES



WE DON'T SHIP AIR BUT PRODUCTS

Our packing robot adapts the packaging to the content and volume of the goods. The new advanced technology contributes to a more eco-friendly and sustainable logistics management.





”

Better for you
- and the environment

PRO WEAR CARE

PRO Wear CARE is our line of products with a certified EU Ecolabel. The line has focus on environment, social responsibility and creating a sustainable end product with a long lifespan.

BETTER FOR THE ENVIRONMENT AND BETTER FOR YOU!

- You protect nature and the environment
- You take care of yourself and your loved ones
- You conserve the Earth's resources
- You contribute to sustainable development



EU Ecolabel - PRO WEAR CARE

EU ECOLABEL

Our 2018 launch of the first PRO Wear CARE series with a certified EU Ecolabel was therefore our next natural step. We want to contribute to the reduction of the overall environmental impact – from production to consumption. The EU Ecolabel looks at every step of the product's journey and contributes to solving the environmental problems that might occur in the process – benefitting people, the environment and the Earth's resources. The EU Ecolabel is your guarantee for environmentally friendly production and manufacturing of products.

The EU Ecolabel places extended requirements on raw materials, chemicals, waste management and power resources in order to limit the use of hazardous chemicals and heavy metals in the process. These requirements ensure that the environmental impact is limited both during the manufacturing process and when in use. High demands are also placed on design, materials and quality to ensure the products' long life.



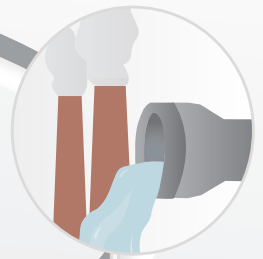
Sustainable end
product with a
long lifespan



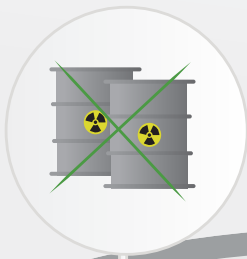
We care
for the
enviroment



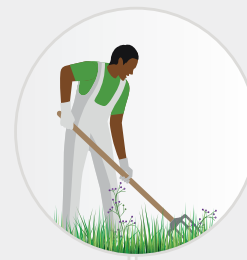
Social
responsibility



Low
water & air
emission



NO thank you
to toxic
chemicals



BCI
farmers



Recycled polyester
(PET)



BCI
sourced cotton

PRO Wear CARE T-shirt | V-neck



Men No. 0372



Women No. 0373



White



Silver grey



Light blue



Navy



Black

PRO Wear^{by ID®}



Men: XS - 6XL
Women: XS - 6XL



60 % cotton / 40 % polyester



210 - 220 g/m²



Regular



ISO 15797

- EU Ecolabel certified T-shirt with V-neck
- Responsibly produced cotton
- Recycled polyester

White

Colour



PRO Wear CARE T-shirt



Men No. 0370



Women No. 0371



White



Silver grey



Light blue



Navy



Black

PRO Wear^{by ID®}



Men: XS - 6XL
Women: XS - 6XL



60 % cotton / 40 % polyester



210 - 220 g/m²



Regular



ISO 15797

- EU Ecolabel certified T-shirt with round neck
- Responsibly produced cotton
- Recycled polyester

White

Colour



PRO Wear_{by ID®}



PRO Wear_{by ID®}



PRO Wear CARE polo shirt



Men No. 0374



Women No. 0375

PRO Wear^{by ID®}



Men: XS - 6XL
Women: XS - 6XL



50 % cotton / 50 % polyester



210 - 220 g/m²



Regular



ISO 15797

- EU Ecolabel certified, durable polo shirt
- Responsibly produced cotton
- Recycled polyester

White

Colour



White



Silver grey



Light blue



Navy



Black



We want to make a positive difference to the people we collaborate with. This is also why we developed the PRO Wear CARE line of textile products with certified EU Ecolabel. The products have focus on the environment, social responsibility and creating a sustainable end product with a long lifetime.

PRO Wear^{by ID®}

MADE TO LAST

Hard work demands clothing which is designed for movement and wear. PRO Wear by ID® is developed for people who are active in their work, and need clothing which simply lasts, day in and day out.

PRO Wear by ID® is available in many sizes and styles, and all products are designed for movement, so they are comfortable to wear in any working situation. The clothing is also pre-shrunk, so you can always rely on the fitting. It can handle daily washing at temperatures up to 80°C for whites, while colours can be washed at 60°C.



”
Use it often
- Use it well

PRO Wear T-shirt



Men No. 0300

PRO Wear by ID®



Men: XS - 6XL*



60 % cotton / 40 % polyester



210 - 220 g/m²



Regular



ISO 15797

- Extra durable T-shirt
- Neck and shoulder bands
- Half moon at neck

*XS only in white, silver grey, light blue, navy, coral, dusty aqua, dusty green and black

White Colour



White



Grey melange



Silver grey



Charcoal



Coral



Red



Bordeaux



Orange



Yellow



Dusty aqua



Dusty green



Lime



Bottle green



Purple



Light blue



Blue melange



Azure



Royal blue



Navy



Black



PRO Wear_{by ID®}



PRO Wear T-shirt | women



Women No. 0312

PRO Wear^{by ID®}



Women: XS - 6XL



60 % cotton / 40 % polyester



210 - 220 g/m²



Regular



ISO 15797

- Extra durable T-shirt
- Round neck
- Side slit

White

Colour



White



Grey melange



Coral



Red



Dusty pink



Dusty aqua



Dusty green



Lime



Purple



Light blue



Blue melange



Azure



Navy



Black

PRO Wear^{by ID®}

All PRO Wear by ID® products have been pre-shrunk at very high temperatures, both before and after dyeing, for extra stability and long lifetime.

PRO Wear T-shirt | ½ sleeve | women



Women No. 0315



White



Light blue



Navy

PRO Wear^{by ID®}



Women: XS - 6XL



60 % cotton / 40 % polyester



210 - 220 g/m²



Regular



ISO 15797

- Extra durable T-shirt with round neck
- Side slit
- Sleeves end at the elbow

White



Colour



PRO Wear T-shirt | ¾ sleeve | women



Women No. 0313



White



Red



Light blue



Navy



Black

PRO Wear^{by ID®}



Women: S - 6XL



60 % cotton / 40 % polyester



210 - 220 g/m²



Regular



ISO 15797

- Extra durable T-shirt with ¾-length sleeves
- Round neck
- Side slit

White



Colour



PRO Wear^{by ID®}

PRO Wear T-shirt | light



Men No. 0310



PRO Wear^{by ID®}



Men: XS - 6XL



50 % cotton / 50 % polyester



175 g/m²



Regular



ISO 15797

- Extra durable T-shirt in a light fabric
- Four-layer ribbing in neck
- Neck and shoulder bands, half moon at the neck



PRO Wear T-shirt | light | women



Women No. 0317



PRO Wear^{by ID®}



Women: XS - 6XL



50 % cotton / 50 % polyester



175 g/m²



Regular



ISO 15797

- Extra durable T-shirt in a light fabric
- Four-layer ribbing in neck
- Neck and shoulder bands, half moon at the neck



PRO Wear T-shirt | long-sleeved



Men No. 0311



White



Grey melange



Silver grey



Red



Royal blue



Navy



Black

PRO Wear^{by ID®}



Men: XS - 6XL



60 % cotton / 40 % polyester



210 - 220 g/m²



Regular



ISO 15797

- Extra durable T-shirt with long sleeves
- Four-layer ribbing in neck
- Neck and shoulder bands, half moon at the neck

*XS only in white and navy

White Colour



PRO Wear polo shirt | pocket



Men No. 0320



Women No. 0321

PRO Wear^{by ID®}



Men: 2XS - 6XL*
Women: XS - 4XL



50 % cotton / 50 % polyester



210 - 220 g/m²



Regular



ISO 15797

- Extra durable and classic polo shirt
- Women No. 0321: without chest pocket
- Neck and shoulder bands, half moon at the neck

*Men: 2XS only in white

*Ladies without pocket



White



Colour



White



Grey melange



Silver grey



Charcoal



Coral



Red



Bordeaux



Orange



Yellow



Dusty aqua



Dusty green



Lime



Bottle green



Purple



Light blue



Blue melange



Azure



Royal blue



Navy



Black

PRO Wear^{by ID®}



PRO Wear polo shirt | no pocket



Men No. 0324



PRO Wear^{by ID®}



Men: XS - 6XL



50 % cotton / 50 % polyester



210 - 220 g/m²



Regular



ISO 15797

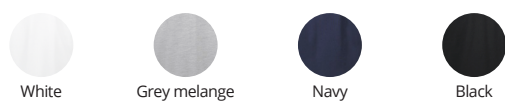
- Extra durable and classic polo shirt
- Neck and shoulder bands
- Half moon at the neck



PRO Wear polo shirt | long-sleeve



Men No. 0326



PRO Wear^{by ID®}



Men: XS - 6XL*



50 % cotton / 50 % polyester



210 - 220 g/m²



Regular



ISO 15797

- Durable polo shirt with long sleeves
- Chest pocket
- Neck and shoulder bands, half moon at the neck

*5XL + 6XL only in white and black



PRO Wear polo shirt | press stud



Men No. 0330



White



Grey melange



Silver grey



Red



Light blue



Royal blue



Navy



Black

PRO Wear^{by ID®}



Men: XS - 6XL



50 % cotton / 50 % polyester



210 - 220 g/m²



Regular



- Durable polo shirt with press studs
- Neck and shoulder bands
- Half moon at neck

White

Colour



PRO Wear long-sleeve polo shirt | press stud



Men No. 0336



White



Silver grey



Red



Navy

PRO Wear^{by ID®}



Men: XS - 6XL



50 % cotton / 50 % polyester



210 - 220 g/m²



Regular



- Durable polo shirt with long sleeves
- Press studs on the placket
- Neck and shoulder bands, half moon at the neck

White

Colour



PRO Wear^{by ID®}



PRO Wear polo shirt | piping



Men No. 0328



White



Bordeaux



Light blue



Azure



Navy



Women No. 0329

PRO Wear_{by ID®}



Men: XS - 6XL
Women: XS - 6XL



50 % cotton / 50 % polyester



210 - 220 g/m²



Regular



ISO 15797

- Durable polo shirt
- Contrast piping at shoulders and sides
- Neck and shoulder bands, half moon at the neck



PRO Wear sweatshirt | classic



Men No. 0360



White



Silver grey



Charcoal



Red



Royal blue



Navy



Black

PRO Wear_{by ID®}



Men: XS - 6XL



60 % cotton / 40 % polyester



290 g/m²



Regular



ISO 15797

- Extra durable sweatshirt with round neck
- Ribbing on collar, sleeves and at bottom
- Soft brushed inner fabric



PRO Wear^{by ID®}



PRO Wear cardigan | sweat



Men No. 0366



Women No. 0367

PRO Wear^{by ID®}



Men: XS - 6XL
Women: XS - 6XL



60 % cotton / 40 % polyester



290 g/m²



Regular



ISO 15797

YKK MAIN ZIPPER

- Extra durable cardigan with catalina collar
- Half moon at the neck and neck strap
- Extra Twill reinforcement at shoulders



White



Silver grey



Red



Light blue



Navy



Black

PRO Wear T-shirt | contrast



Men No. 0302



White



Silver grey



Red



Bottle green



Navy



Black

PRO Wear^{by ID®}



Men: XS - 6XL



60 % cotton / 40 % polyester



210 -220 g/m²



Regular



ISO 15797

- Extra durable two-coloured T-shirt
- Neck and shoulder bands
- Half moon at the neck



PRO Wear polo shirt | contrast



Men No. 0322



White



Silver grey



Red



Bottle green



Navy



Black

PRO Wear^{by ID®}



Men: XS - 6XL



50 % cotton / 50 % polyester



210 -220 g/m²



Regular



ISO 15797

- Durable two-coloured polo shirt
- Neck and shoulder bands
- Half moon at the neck



PRO Wear sweatshirt | contrast



Men No. 0362



White



Silver grey



Red



Bottle green



Navy



Black

PRO Wear^{by ID®}



Men: XS - 6XL



60 % cotton / 40 % polyester



290 g/m²



Regular

OEKO-TEX®
CERTIFIED IN TEXTILES
STANDARD 100
1376-215 DTI
Tested for harmful substances.
www.oeko-tex.com/standard100

ISO 15797

- Extra durable two-coloured sweatshirt
- Ribbing on collar, sleeves and bottom
- Soft, brushed inner fabric



What do the symbols mean?

PRO Wear^{by ID®}

PRO Wear by ID® has been developed for professional use. It can withstand daily washing at high temperatures. The series fulfill requirements of strength, colour-fastness and fit.

ISO 15797

ISO 15797 is an international standard for evaluating a product's suitability for industrial washing. The tests are carried out in close cooperation with external experts.

YKK MAIN ZIPPER

Quality zipper from YKK



The product has been developed to meet the hygiene requirements for food production as defined in HACCP – certified by Hohenstein.



The EU Ecolabel is your guarantee that clothing bearing the EU Ecolabel has as little impact on the environment as possible. The EU Ecolabel ensures that the clothing does not contain pesticide residues and other environmentally harmful chemicals, that eco-friendly dyes have been used and that waste water is handled responsibly.



STANDARD 100 by OEKO-TEX® is your guarantee that the clothing does not contain harmful substances.

STANDARD 100 by OEKO-TEX®, Annex 4, product class 2, is subject to requirements covering pH value and the content of, for example, pesticides and heavy metals.



STANDARD 100 by OEKO-TEX®, Annex 6, product class 1, places even stricter requirements on the content of substances in the clothing which are hazardous to human health and the environment.



TENCEL™ is a trademark of Lenzing AG. TENCEL™ Lyocell is made of natural raw material wood sourced from sustainable forestry in an environmentally friendly closed-loop system in which water and solvents from production are reused. TENCEL™ Lyocell provides breathability, softness and is quick-drying and naturally reduces bacterial growth.

FITTING SYMBOLS



Loose fitting model



Regular model



Tight fitting model

WASHING SYMBOLS



Normal wash (40 degrees)



Normal wash (60 degrees)



Normal wash (80 degrees)



No bleach



No ironing



Ironing at low temperature
max. 110 degrees



Ironing at medium temperature
max. 150 degrees



No chemical cleaning



Do not tumble dry



Tumble dry at low temperature
max. 60 degrees



Tumble dry at normal temperature
max. 80 degrees



Hang drying



Chemical cleaning with correct liquid

Industrial washing recommendations PRO Wear by ID®

The PRO Wear by ID® line is developed and tested for industrial washing. Below we have passed on some useful advice based on many years of experience which may contribute to optimal use and durability.

Our experience tells us, that there are differences in routines and methods in industrial washing. The differences that may be experienced could be in e.g. shrinkage and colour.

The following instructions are only a guide and serves as a supplement to our clients' own experiences.

General comments

Always check the recommendation on the care label of the garment. The products are tested according to ISO 15797, but we also recommend own wash/drying test before use.

All garments should be washed at least once before taken into use. This is important due to chemical residues and excess dye from production of fabrics and to inevitable shrinkage (also for "pre-shrunk" products). Also to minimize possible surplus fibres/fuzzing from fleece and sweat products which are brushed inside, which disappears after 2-5 washes.

Consider shrink variations up to app. +/- 5-7% for sweat products and other up to app. +/- 5%, and fabrication tolerances up to +/- 1,5 cm.

Industrial washing

Do not apply bleaching and chemicals with optical brighteners on coloured products. Effective chemicals incl. chlorine, disinfectants and optical brighteners can reduce life time and influence quality/appearance of fabrics and accessories.

The indicated type and dosage from the supplier of chemicals must be followed closely. Textiles should always be sorted/washed according to type and colour.

Wash the garments with the inside out and close zippers and velcro.

Avoid "over drying". Choose the correct drying temperature according to the fibre type of the garment. Remember that polyester dries faster than cotton, e.g. fleece products.

Steamer (tunnel) drying may influence fit/shape and shrinkage pattern. Carry out own test to clarify possible effects from the drying method. Steam must be added to avoid "over drying."

How to extend the durability of logos

It is important to choose logo quality and type (print/transfer, embroidery) considering the use and washing/drying method of the garment.

The wash instruction in the care label on the clothes also applies for the logo.

Harsh chemicals such as bleach etc. can affect the logo in wash.

Other ID® products in industrial washing

Other ID® products besides PRO Wear by ID® are used in industrial washing. However, it is very important to follow the instructions on the care label for such products. Especially for chemicals, temperatures and drying methods there are certain limitations which must be observed.

ID® cannot assume any responsibility for complaints arising from inappropriate use and/or washing of our products.

By any complaints, please provide 3-5 samples + information about the production number from the carelabel inside, extent/volume and a copy of the washing process and chemical prescription.

PRO Wear^{by ID®}

BECOME A PART OF THE COMMUNITY



www.facebook.com/www.id.dk/



www.instagram.com/identity_official/



www.linkedin.com/company/3308367/

www.id.dk/en/pro-wear-by-id

We reserve the right to make modifications without notice and accept no liability for any printing errors.